

\$3,375,000 - Unit 2 - 1991 E Alameda Ave, Denver

MLS® #3575721 Listing Office LIV Sotheby's International Realty

\$3,375,000

4 Bedroom, 6.00 Bathroom, 5,492 sqft
Residential on 1 Acres

Country Club, Denver, CO

Set on a private enclave of Denver's most beautiful historic homes on the south side of the Denver Country Club Golf Course. This East Coast inspired home is filled with charm, elegance and style. The minute you enter the front door you are welcomed into a beautiful foyer with high beamed ceilings and a grand spiral staircase. Plenty of room with private master bedroom retreat complete with sitting area and his and her private baths. 3 additional bedrooms and 2 baths up. Across the breezeway to a bonus billiard's room or children's recreational space. New chef's kitchen with marble counters and large casual eating space complete with cozy fireplace. All new Pella windows through-out. Amazing screened-in porch overlooking 3/4 acre yard complete with perennial gardens and open space.

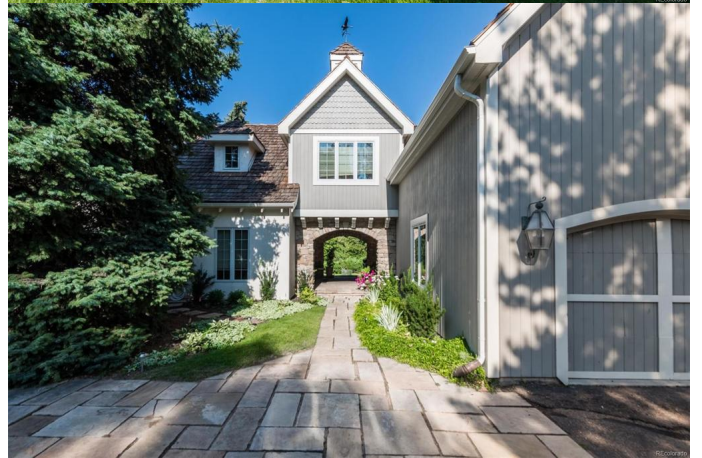


Listing Courtesy of LIV Sotheby's International Realty

Built in 1988

Essential Information

MLS® #	3575721
Price	\$3,375,000
Bedrooms	4
Bathrooms	6.00
Full Baths	3
Half Baths	2



Square Footage	5,492
Acres	0.72
Year Built	1988
Type	Residential
Sub-Type	Detached Single Family
Style	2 Story
Status	Active
Features	Corner Lot, Cul-de-Sac, On Golf Course

Community Information

Address	Unit 2 - 1991 E Alameda Ave
Subdivision	Country Club
City	Denver
County	Denver
State	CO
Zip Code	80209

Amenities

Parking Spaces	2
Parking	Garage (Attached)
# of Garages	2

Interior

Interior Features	Cable Available, Internet Access (Wired), Kitchen Island, Master Bath, Master Suite, Open Floor Plan, Triple Pane Windows
Appliances	Convection Oven, Cook Top, Dishwasher, Disposal, Double Oven, Freezer, Refrigerator (Kitchen), Self-Cleaning Oven, Smoke Alarm, Stove/Range/Oven, Washer
Heating	Radiant
Cooling	Air Conditioning-Central, Ceiling Fan
Fireplace	Yes
# of Fireplaces	2
Fireplaces	Living Room, Kitchen

Exterior

Exterior Features	Covered Deck, Covered Patio, Fence, Garden Area, Patio, Professional Landscaping, Sprinkler System, Yard
Lot Description	31200.00
Windows	Triple Pane Windows

Roof	Wood
Construction	Frame

School Information

District	Denver 1
Elementary	Steele
Middle	Merrill
High	South

Additional Information

Zoning	R-1
--------	-----



Terms and Conditions: The content relating to real estate for sale in this Web site comes in part from the Internet Data eXchange ("IDX") program of METROLIST, INC., DBA RECOLORADO® Real estate listings held by brokers other than The Cascade Team Real Estate are marked with the IDX Logo. This information is being provided for the consumers personal, non-commercial use and may not be used for any other purpose. All information subject to change and should be independently verified.

Copyright 2019 METROLIST, INC., DBA RECOLORADO® -- All Rights Reserved 6455 S. Yosemite St., Suite 500 Greenwood Village, CO 80111 USA

Listing information last updated on July 19th, 2019 at 9:49pm PDT