

\$1,899,000 - 9258 E Wesley Ave, Denver

MLS® #7703137 Listing Office RE/MAX 100 INC.

\$1,899,000

5 Bedroom, 6.00 Bathroom, 7,361 sqft
Residential on 0 Acres

Cherry Creek Country Club, Denver, CO

This timeless, contemporary custom built home is situated on the 10th Fairway of the prestigious Cherry Creek Country Club Golf course. This beautifully styled 2-story design features a main level luxurious master suite w/deck access, gas fireplace, 5 piece bath w/jetted tub, 2 large his & her walk-in closets. The great room design, expansive dining area & gourmet kitchen make this home perfect for corporate or personal entertaining. The private study boasts a gas fireplace, extensive built in shelves & french doors to enclosed patio. Dramatic 2-story entrance & 20' ceilings! Stunning views from the covered/heated outdoor deck. Upper level 2nd master suite. The lower level has a large family room w/gas fireplace, theater room, card room & work out room. Quality construction thru-out. Hand troweled walls, built in shelves, surround sound speakers. Architectural niches, arches & sconces, 7" baseboards, hand cranked casement Pella windows, natural stone fireplaces & flooring. Exquisite detailed craftsmanship.

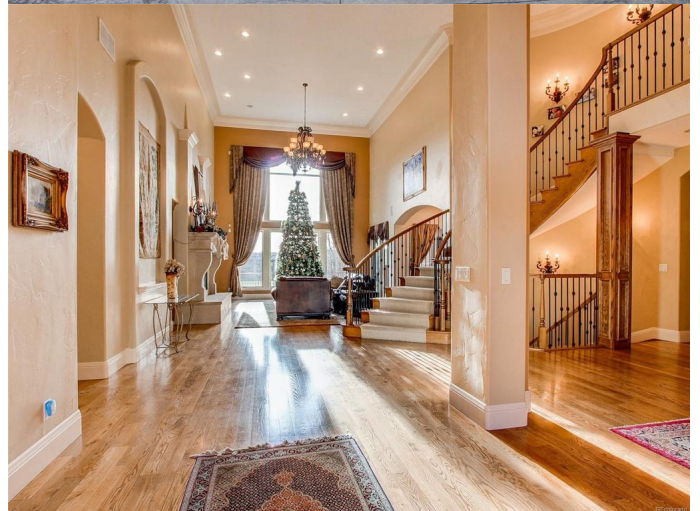


Listing Courtesy of RE/MAX 100 INC.

Built in 2004

Essential Information

MLS® #	7703137
Price	\$1,899,000



Bedrooms	5
Bathrooms	6.00
Full Baths	3
Half Baths	1
Square Footage	7,361
Acres	0.24
Year Built	2004
Type	Residential
Sub-Type	Detached Single Family
Style	2 Story
Status	Active
Features	Gated Community, Golf Community, On Golf Course

Community Information

Address	9258 E Wesley Ave
Subdivision	Cherry Creek Country Club
City	Denver
County	Arapahoe
State	CO
Zip Code	80231

Amenities

Amenities	Grounds Maintenance, Trash Removal
Parking Spaces	3
Parking	Garage (Attached)
# of Garages	3
View	Golf Course View, Mountain View

Interior

Interior Features	Breakfast Nook, Built-Ins, Cable Available, Eating Space / Kitchen, Exercise Room, Entrance-Outside, Five Piece Bath, Heated, Entrance-Inside, Internet Access (Wired), Jet Action Tub, Kitchen Island, Master Bath, Master Suite, Open Floor Plan, Pantry, Security Entrance, Speakers, Built-in, Utility Sink, Walk-in Closets, Wet Bar, Window Coverings, Game Room
Appliances	Dishwasher, Disposal, Double Oven, Freezer, Microwave Oven, Refrigerator (Kitchen), Refrigerator (Other), Self-Cleaning Oven, Smoke Alarm, Washer, Wine Cooler
Heating	Forced Air
Cooling	Air Conditioning-Central

Fireplace	Yes
# of Fireplaces	5
Fireplaces	Basement, Great Room, Master Bedroom, Other, Outdoor, Rec/Bonus Room

Exterior

Exterior Features	Covered Deck, Gas Grill, Hot Tub/Spa
Lot Description	10545.00
Windows	Window Coverings
Roof	Concrete Tile
Construction	Frame

School Information

District	Cherry Creek 5
Elementary	Eastridge
Middle	Prairie
High	Overland

Additional Information

Zoning	R1
--------	----



Terms and Conditions: The content relating to real estate for sale in this Web site comes in part from the Internet Data eXchange ("IDX") program of METROLIST, INC., DBA RECOLORADO® Real estate listings held by brokers other than The Cascade Team Real Estate are marked with the IDX Logo. This information is being provided for the consumers personal, non-commercial use and may not be used for any other purpose. All information subject to change and should be independently verified.

Copyright 2019 METROLIST, INC., DBA RECOLORADO® -- All Rights Reserved 6455 S. Yosemite St., Suite 500 Greenwood Village, CO 80111 USA

Listing information last updated on June 17th, 2019 at 10:35am PDT