

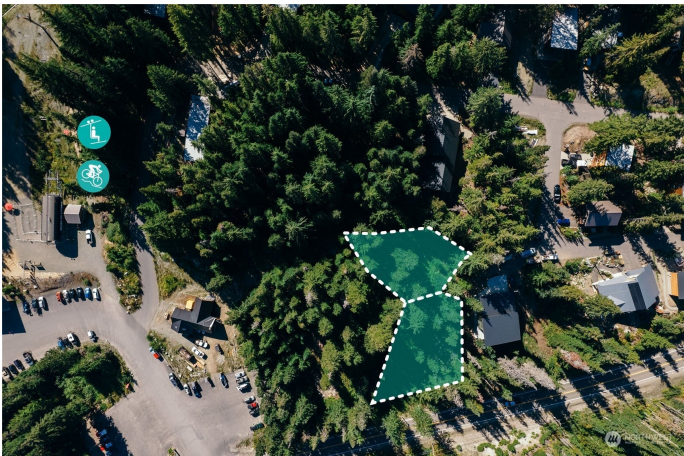
\$495,000 - 2423 Xx Cedar Lane, Snoqualmie Pass

MLS® #2209193

\$495,000

0 Bedroom, 0.00 Bathroom,
Lot/Land on 0.48 Acres

Snoqualmie Pass, Snoqualmie Pass, WA



Mountain Creek at Silver Fir is a premier home-site community at Snoqualmie Pass with ski, board, and mountain bike access easements directly to the slopes of Silver Fir high speed chair. Owners choose their own architects and general contractors to design and build their dream mountain homes. Exceptional opportunity to own an extremely rare double lot, shy half acre. Fiber, power, sewer and water are available. Located adjacent to Silver Fir High Speed Chair and Lodge (with live music in the summer!), this community features carefully designed homes, covenants, and paved roads, in unincorporated Kittitas County. You'll love this mountain community and all it has to offer out your front door!

Essential Information

MLS® #	2209193
List Price	\$495,000
Sale Price	\$495,000
Bathrooms	0.00
Acres	0.48
Type	Lot/Land
Sub-Type	Land
Status	Sold

Community Information

Address	2423 Xx Cedar Lane
---------	--------------------

Area	948 - Upper Kittitas County
Subdivision	Snoqualmie Pass
City	Snoqualmie Pass
County	Kittitas
State	WA
Zip Code	98068

Exterior

Lot Description	Dead End Street, Paved
-----------------	------------------------

School Information

District	Easton
----------	--------

Additional Information

Days on Market	163
Cumulative Days on Market	163
Days on Website	154