

\$685,000 - 242 4th Avenue S 1, Edmonds

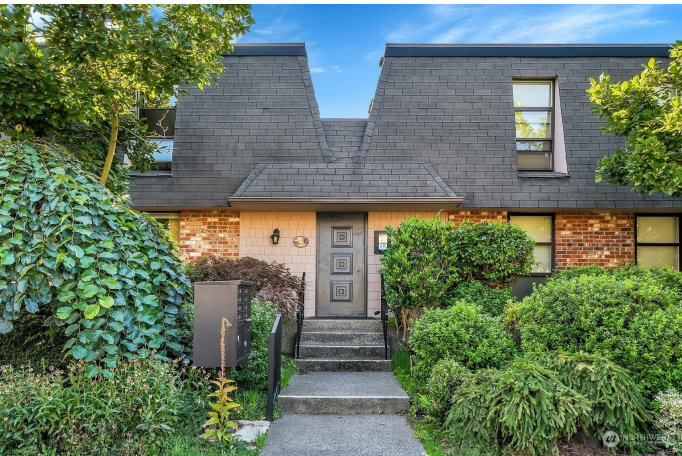
MLS® #2290740

\$685,000

2 Bedroom, 2.5 Bathroom, 1,072 sqft
Residential on 0.22 Acres

Downtown Edmonds, Edmonds, WA

Nestled in the heart of Edmonds, this updated 2-bed, light-filled condo offers the perfect blend of privacy & walkability to all the best of the city. Main level features LVP flooring & cozy living room w/ two-sided corner wood-burning fireplace. Bright kitchen boasts dual-toned cabinetry w/ brushed gold hardware, while the dining area opens to private, fully fenced patio. Lower level w/ laundry area & powder bath. Upstairs, the primary suite offers dual closets & ¾ bath w/ new walk-in shower featuring subway tile & hexagon flooring. 2nd bed spacious w/ full hallway bath nearby. Alley access, garage parking, & storage unit add convenience. Moments from farmer’s market, shops, restaurants, & coffee spots.



Built in 1974

Essential Information

MLS® #	2290740
List Price	\$685,000
Sale Price	\$660,000
Price Per SqFt	\$616
Bedrooms	2
Bathrooms	2.5
Full Baths	1
Half Baths	1
Square Footage	1,072
Acres	0.22

Year Built	1974
Type	Residential
Sub-Type	Condominium
Status	Sold

Community Information

Address	242 4th Avenue S 1
Area	730 - Southwest Snohomish
Subdivision	Downtown Edmonds
City	Edmonds
County	Snohomish
State	WA
Zip Code	98020

Amenities

Parking Spaces	2
Parking	Common Garage, Off Street, Uncovered
Garage Spaces	1

Interior

Interior Features	Balcony/Deck/Patio, Ceramic Tile, Dryer-Electric, Fireplace, Wall to Wall Carpet, Washer, Water Heater, Yard
Appliances	Dishwasher(s), Dryer(s), Disposal, Refrigerator(s), Stove(s)/Range(s), Washer(s)
Fireplace	Yes
# of Fireplaces	1
Fireplaces	Wood Burning
# of Stories	2

Exterior

Exterior Features	Brick, Wood
Lot Description	Alley, Curbs, Paved, Secluded, Sidewalk

School Information

District	Edmonds
Elementary	Edmonds Elem
Middle	College Pl Mid
High	Edmonds Woodway High

Additional Information

Days on Market	370
Cumulative Days on Market	370
Days on Website	363
HOA Fees	\$450
HOA Fees Frequency	Monthly