

\$1,995,999 - 1208 2nd St, Snohomish

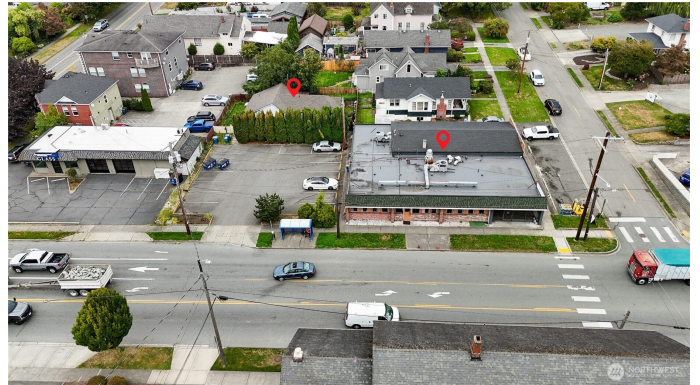
MLS® #2332491

\$1,995,999

0 Bedroom, 0.00 Bathroom,
Business/Commercial on 0.35 Acres

Snohomish, Snohomish, WA

Serviss Commercial at RE/MAX Elite is proud to present this unique opportunity in historic downtown Snohomish. Spread across three parcels this offering includes a 5,760 sq ft retail building, a 1,102 sq ft duplex, and a dedicated 14 space parking lot. The retail building is configured into 3 suites, 2 of which are leased, making this the perfect opportunity for an owner/user to operate out of the large space (3,260 sq ft) and supplement their expenses with strong leases! The duplex is fully leased with great tenants.



Built in 1910

Essential Information

MLS® #	2332491
List Price	\$1,995,999
Sale Price	\$1,865,000
Bathrooms	0.00
Acres	0.35
Year Built	1910
Type	Business/Commercial
Sub-Type	Commercial Industrial
Status	Sold

Community Information

Address	1208 2nd St
Area	750 - East Snohomish County
Subdivision	Snohomish
City	Snohomish

County	Snohomish
State	WA
Zip Code	98290

Amenities

Parking Spaces	14
----------------	----

Exterior

Exterior Features	Brick
Foundation	Block

Additional Information

Days on Market	107
Cumulative Days on Market	107
Days on Website	34