

\$350,000 - 216 Se 1st Street, Winlock

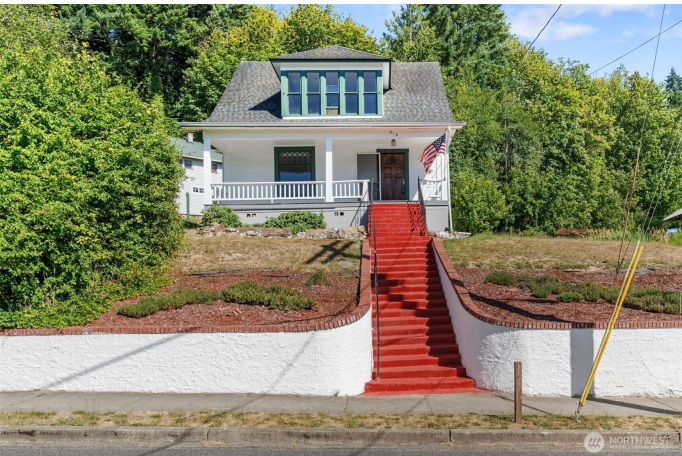
MLS® #2332572

\$350,000

4 Bedroom, 1.5 Bathroom, 1,782 sqft
Residential on 0.46 Acres

Winlock, Winlock, WA

Now offering a \$5,000 credit toward buyer’s closing costs or flooring with full price offer! Don’t miss this rare chance to own a charming 1901 home plus an adjacent 0.25-acre lot in the heart of Winlock. The home features a freshly painted exterior, beautiful original woodwork, a cozy wood-burning fireplace, and spacious living areas. The additional lot opens the door to endless possibilities—expand your yard, build a shop, or explore investment options. Both parcels have been recently surveyed for added peace of mind. City utilities available for land lot (buyer to verify). All located near downtown Winlock’s shops, dining, and just 10 minutes from I-5 for an easy commute to Seattle or Portland.



Built in 1901

Essential Information

MLS® #	2332572
List Price	\$350,000
Sale Price	\$350,000
Price Per SqFt	\$196
Bedrooms	4
Bathrooms	1.5
Half Baths	1
Square Footage	1,782
Acres	0.46
Year Built	1901

Type	Residential
Sub-Type	Single Family Residence
Status	Sold

Community Information

Address	216 Se 1st Street
Area	432 - Napavine
Subdivision	Winlock
City	Winlock
County	Lewis
State	WA
Zip Code	98596

Amenities

Parking Spaces	1
Parking	Driveway, Detached Garage, Off Street, RV Parking
Garage Spaces	1

Interior

Interior Features	Bath Off Primary, Dining Room, Fireplace, Water Heater
Appliances	Dishwasher(s), Refrigerator(s), Stove(s)/Range(s)
Fireplace	Yes
# of Fireplaces	1
Fireplaces	Wood Burning

Exterior

Exterior Features	Wood
Lot Description	Corner Lot, Paved, Sidewalk
Foundation	Poured Concrete

School Information

District	Winlock
Elementary	Winlock Miller Elem
Middle	Buyer To Verify
High	Buyer To Verify

Additional Information

Days on Market	378
Cumulative Days on Market	378

Days on Website

1