

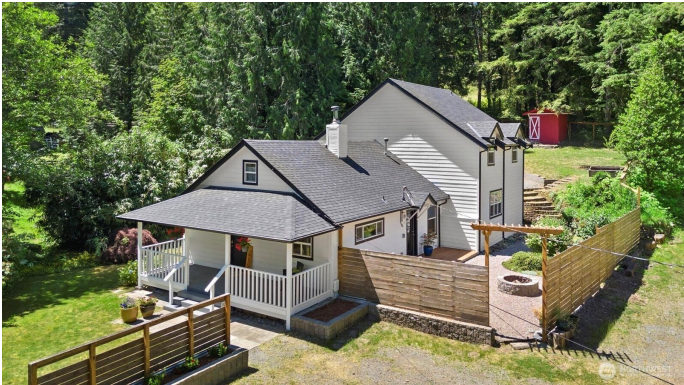
\$975,000 - 9425 384th Avenue Se, Snoqualmie

MLS® #2377083

\$975,000

3 Bedroom, 2.5 Bathroom, 2,580 sqft
Residential on 1.55 Acres

Snoqualmie, Snoqualmie, WA



Just a short stroll from historic downtown Snoqualmie, this beautifully updated Craftsman sits on over 1.5 acres of lush grounds—a true gardener’s paradise. Inside, enjoy a newly updated kitchen, LVP flooring, and a spacious main-floor primary suite with a massive walk-in closet. The second floor features two bedrooms and a dedicated office. Ample storage options include a finished attic and multiple outbuildings. Located in the highly rated SVSD and just minutes from I-90, commuting is a breeze. Outdoor enthusiasts will love the proximity to skiing, golfing, scenic trails, and vibrant community amenities. Packed with updates—including a newer heat pump, roof, remodeled bathrooms, fresh interior and exterior paint, and more!

Built in 1939

Essential Information

MLS® #	2377083
List Price	\$975,000
Sale Price	\$955,000
Price Per SqFt	\$370
Bedrooms	3
Bathrooms	2.5
Full Baths	1
Half Baths	1
Square Footage	2,580

Acres	1.55
Year Built	1939
Type	Residential
Sub-Type	Single Family Residence
Style	Craftsman
Status	Sold

Community Information

Address	9425 384th Avenue Se
Area	540 - East of Lake Sammamish
Subdivision	Snoqualmie
City	Snoqualmie
County	King
State	WA
Zip Code	98065

Amenities

Parking Spaces	2
Parking	Detached Carport

Interior

Interior Features	Bath Off Primary, Double Pane/Storm Window, Dining Room, French Doors, Vaulted Ceiling(s), Walk-In Closet(s), Water Heater
Appliances	Dishwasher(s), Dryer(s), Refrigerator(s), Stove(s)/Range(s), Washer(s)

Exterior

Exterior Features	Cement Planked, Wood, Wood Products
Lot Description	Open Space, Paved, Secluded
Foundation	Block, Poured Concrete

School Information

District	Snoqualmie Valley
Elementary	Snoqualmie Elem
Middle	Snoqualmie Mid
High	Mount Si High

Additional Information

Days on Market	64
Cumulative Days on Market	64
Days on Website	82