

\$36,000 - 11011 & 11013 Cascade Place, Anderson Island

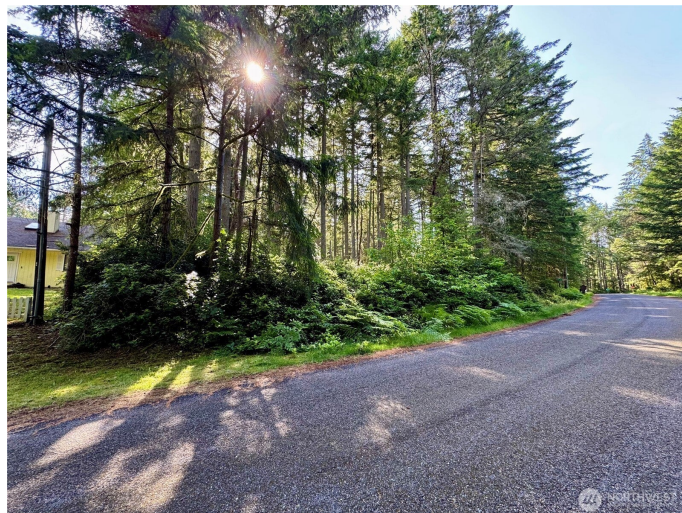
MLS® #2381850

\$36,000

0 Bedroom, 0.00 Bathroom,
Lot/Land on 0.39 Acres

Lake Josephine, Anderson Island, WA

Double Lot Package on Anderson Island! Not one, but two incredibly prime building lots are available for your dreams to come to life! These lots are level and combined are just shy of 0.4 acres of blank canvas for your home build. Power and water are in the street! Located within walking distance and a brief drive to the coveted Ray Park on beautiful Lake Josephine! A favorite summer haunt, with volleyball, picnic tables, playground, swimming, & more. Riviera Community Club offers a 9-hole executive golf course, Lakeshore Restaurant, Zipline park & tennis court, boat launch, saltwater marina, campground, & SO MUCH MORE. Just a short 20-minute ferry ride from the quaint town of Steilacoom. Come discover what all the buzz is about!



Essential Information

MLS® #	2381850
List Price	\$36,000
Sale Price	\$30,000
Bathrooms	0.00
Acres	0.39
Type	Lot/Land
Sub-Type	Land
Status	Sold

Community Information

Address	11011 & 11013 Cascade Place
Area	12 - Anderson Island
Subdivision	Lake Josephine
City	Anderson Island
County	Pierce
State	WA
Zip Code	98303

Exterior

Lot Description	Paved, Secluded
-----------------	-----------------

School Information

District	Steilacoom Historica
Elementary	Buyer To Verify
Middle	Pioneer Mid
High	Steilacoom High

Additional Information

Days on Market	79
Cumulative Days on Market	79
Days on Website	35
HOA Fees	\$850
HOA Fees Frequency	Annually