

\$1,949,999 - 18305 Snohomish Avenue, Snohomish

MLS® #2406526

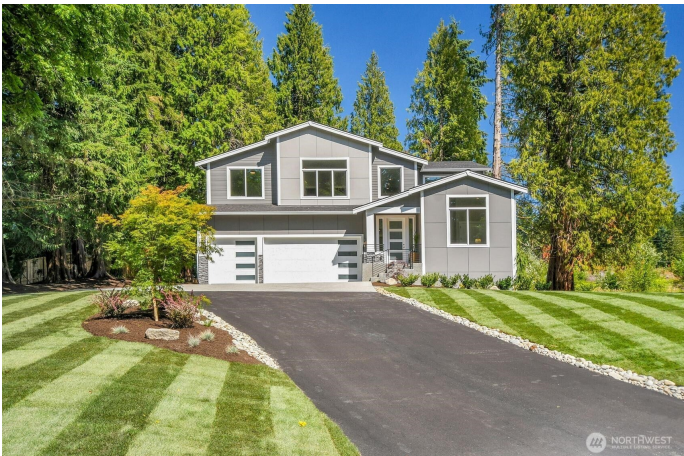
\$1,949,999

4 Bedroom, 3 Bathroom, 3,653 sqft

Residential on 1.31 Acres

Clearview, Snohomish, WA

Modern luxe in this 4-bed new construction Clearview home. Enjoy park-like setting on a roaming 1.3+ acre lot. Step into soaring ceilings & spacious gathering spaces. The expansive great rm offers floor-to-ceiling windows, wide-plank hardwoods & sleek gas fireplace framed by custom stonework & built-ins. Entertain in chef's kitchen featuring quartz island, easily seat 4, walk-in pantry, white shaker cabs & SS appl. Den on main. Luxurious primary retreat w/ spa-like 5-pc bath & oversized WIC. Upstairs bonus rm w/ vaulted ceilings. Laundry room w/ cabinetry & sink. Enjoy year-round entertaining on covered deck w/ built-in BBQ & fireplace. Manicured yard w/ sprinkler system. 3-car garage & built-in mudroom. Central A/C. Built by Arcadia Homes.



Built in 2025

Essential Information

MLS® #	2406526
List Price	\$1,949,999
Sale Price	\$1,976,000
Price Per SqFt	\$541
Bedrooms	4
Bathrooms	3
Full Baths	2
Square Footage	3,653
Acres	1.31

Year Built	2025
Type	Residential
Sub-Type	Single Family Residence
Status	Sold

Community Information

Address	18305 Snohomish Avenue
Area	610 - Southeast Snohomish
Subdivision	Clearview
City	Snohomish
County	Snohomish
State	WA
Zip Code	98296

Amenities

Parking Spaces	3
Parking	Attached Garage
Garage Spaces	3

Interior

Interior Features	Bath Off Primary, Ceiling Fan(s), Double Pane/Storm Window, Dining Room, Fireplace, Sprinkler System, Walk-In Closet(s), Walk-In Pantry, Wine/Beverage Refrigerator
Appliances	Dishwasher(s), Stove(s)/Range(s)
Fireplace	Yes
# of Fireplaces	1
Fireplaces	Gas

Exterior

Exterior Features	Cement Planked
Lot Description	Dead End Street
Foundation	Poured Concrete

School Information

District	Snohomish
Elementary	Cathcart Elem
Middle	Valley View Mid
High	Glacier Peak

Additional Information

Days on Market	27
Cumulative Days on Market	27
Days on Website	55